

## City of Lancaster: Child Lead Poisoning FAQ

### Q1: What should I do if I think my child might have lead poisoning? What are the resources and hospitals?

- Get your child screened immediately — it's a quick blood test!
- **Contacts:**
  - If you have a family doctor, ask him/her to test your child
  - If you do not have a family doctor, see **Figure 1** for information regarding a variety of hospitals in Lancaster with various free and availability options
  - You may also contact **1-800-986-KIDS** for assistance in locating a clinic in your local area that will provide testing for free or possibly charge a sliding fee

### Q2: My child does not have insurance, what do I do? How do I know if he/she qualifies?

- **Contact:** Children's Health Insurance Program (CHIP) is Pennsylvania's program to provide health insurance to uninsured children and teens who are not eligible for or enrolled in Medical Assistance
- **Qualifications:**
  - Under 19 years of age
  - A U.S. Citizen, U.S. National or Qualified Alien
  - A resident of Pennsylvania
  - Uninsured and not eligible for Medical Assistance
- **Income guidelines/health insurance providers:**
  - For health insurance providers in Lancaster, PA that offer CHIP, see **Figure 2**
  - For most families, it's free. Families with higher incomes will pay low monthly premiums and co-pays for some services. For income ranges, see **Figure 3**
  - For rates by company, see **Figure 4**
  - Visit <http://www.chipcoverspakids.com/faq/eligibility-criteria-and-benefits/> for further FAQ on eligibility criteria and benefits for CHIP

### Q3: Does my home qualify for a Healthy Homes inspection to assess risk?

- **Contact:** The Lead and Healthy Homes Program (LHHP) at **1-800-374-7114** or **717-782-6442**

*The LHHP seeks to create safe and healthy housing for vulnerable occupants by addressing environmental health and safety hazards in homes*

- Conducts a home inspection and target the lead in the home
- Tests the soil around the home
- Helps families locate remediation options based on available grants
- Sends report to the codes officer, the homeowner, tenants, doctor, etc.
- **Cost:** Funded through the Department of Health (depends on number of people in the house and income level -- see **Figure 5**)
- **Qualifications:**

- In the SE District, LHHP accepts self referrals, but for a full inspection, the child must be tested by the doctor/be referred by an agency
- If, according to the health and safety guidelines, the child has elevated blood lead levels, LHHP will conduct a full home inspection

**Q4: If my home inspection shows that I need home remediation, what funds are available to create a lead-safe home environment/ to remove the lead-based paint from my home**

- **Contact:** Lead Hazard Control Program (LHCP) at **717-772-2762**  
*Conducts inspections in target homes in Lancaster and hire certified contractors to eliminate lead hazards*
  - **Qualifications:** Homes of low-income families with children under the age of six
  - **Cost:** Free of cost; funded through a grant from the U.S. Department of Housing and Urban Development (HUD)
- **Contact:** Lancaster’s Economic Development and Neighborhood Revitalization at **717-291-4705**  
*Works to revitalize and preserve the City by supporting businesses and protecting existing housing stock*
- **Contact:** Region 3 Local Chapter for the Environmental Protection Agency at **215-814-5000**  
*Lead Safe Renovation Repair and Paint Guideline help*

**Q5: What are some more resources for my specific situation?**

- **Contact:** HUD’s Bureau of Family Health offers a Lead Information Line at **1-800-440-LEAD**  
*Helps callers by providing information on, but not limited to, the following topics:*
  - Prevention and control issues regarding lead poisoning; lead hazard reduction
  - Screening and treatment of children who may be at risk for lead poisoning
  - Environment management, resources for inspection, abatement and lab analysis
  - Current state legislation and federal regulations and policies
- **Contact:** The National Lead Information Center (NLIC) at **1-800-424-LEAD**  
*NLIC offers an Informational Hotline, which provides the general public, and professionals with information about lead, lead hazards, and their prevention*
- **Contact:** Women Infants and Children (WIC) Program of the Community Action Program of Lancaster County at **717-509-3686**  
*Supports pregnant women, mothers and caregivers of infants and young children to keep their families healthy. WIC provides services and referrals to health and social services.*
  - **Qualifications:** Applicants must reside in PA; have a medical or nutritional risk
  - **Cost:** Funded by USDA. Free if meets these gross household income guidelines: <https://www.caplanc.org/Our-Programs/Women-Infants-Children-WIC/WIC-Program-Overview>

**Figure 1: Lead Testing Resources in Lancaster**

<b>Hospital</b>	<b>Location</b>	<b>Services</b>	<b>Fees</b>	<b>Availability</b>	<b>Contact</b>
<b>Lancaster County State Health Center</b>	1661 Old Philadelphia Pike, Lancaster, PA 17602	Provides lead testing, case management, nursing assessment, and arrangement of environmental inspection for children up to age six with a venous blood level at or above the level designated for case management by the Pa Dept. of Health. Provides general information on lead poisoning, including prevention, treatment and hazard reduction.	No fee for low-income families; Medical Assistance, private insurance, and CHIP; Check or money order	Lead testing available by appointment every	<b>717-299-7597</b>
<b>Lancaster General Hospital</b>	555 North Duke Street, Lancaster, PA 17604	Offers lead poisoning screenings	Vary; Accepts Medical Assistance, Medicare, VA, Workers' Compensation and private insurance	Monday through Sunday, 24 hours; Office hours vary	<b>717-544-3138</b>
<b>Lead Information Line</b>	Over telephone	Offers personal help and written information to parents, physicians, contractors and homeowners about lead poisoning and its prevention and control.	None	Monday-Friday, 7 am-7 pm	<b>1-800-440-LEAD</b>
<b>Southeast Lancaster Health Services</b>	<b>Arch Street:</b> 333 North Arch Street, Lancaster, PA 17603  <b>Duke Street:</b> 625 South Duke Street Lancaster, PA 17602  <b>Brightside:</b> 515 B Hershey Avenue Lancaster, PA 17603	Offers lead poisoning screenings, early intervention, and financial assistance/counseling for people without insurance or facing a language barrier	Based on income and family size, if no income will still be expected to pay at least half of the minimum fee at time of appointment; accepts Medical Assistance, Medicare, EPSDT, Health America, Amerihealth Mercy, Health Assurance, Gateway Health Plan, United Healthcare and private insurance	Arch Street: Monday, Wednesday, Friday, 8:00am to 5:00pm; Tuesday and Thursday, 8:00am to 8:00pm  Duke Street: Monday, 8:00am to 8:00pm; Tuesday-Friday, 8:00am to 5:00pm  Brightside: Monday through Friday, 8:00am to 5:00pm	Arch Street: <b>717-299-6372</b>  Duke Street: <b>717-299-6372</b>  Brightside: <b>717-299-6372</b>

**Figure 2: Health Insurance Providers in Lancaster, PA that Offer CHIP**

Health Insurance Company	Contact	Website
Aetna - Central	800-822-2447	<a href="http://www.aetnabetterhealth.com">www.aetnabetterhealth.com</a>
Capital BlueCross	800-543-7101	<a href="http://www.capbluecross.com">www.capbluecross.com</a>
Geisinger Health Plan	866-621-5235	<a href="http://www.CHIP.thehealthplan.com">www.CHIP.thehealthplan.com</a>
Highmark Blue Shield (Central PA)	800-543-7105	<a href="http://www.highmarkblueshield.com">www.highmarkblueshield.com</a>
United HealthCare of PA	800-414-9025	<a href="http://www.uhccommunityplan.com">www.uhccommunityplan.com</a>
UPMC for Kids	800-978-8762	<a href="http://www.upmchealthplan.com">www.upmchealthplan.com</a>

**Figure 3: Income Ranges**

**How to use this chart:**

- Step 1: Locate the number of people in your household.
- Step 2: Find the box that matches your household's annual gross income and age of your children.
- Step 3: Look down the row to the COST BOX to see your approximate, average monthly cost per child and the co-payments per child, per visit.

Example: A four-person household with an annual income of \$69,840 will have an average monthly premium of \$77 per child, plus any co-pays for services.

INCOME*		Low Cost				Full Cost	
household size	Free		ages 0-1		ages 0-18		ages 0-18
	ages 1-5	ages 6-18	ages 0-1	ages 0-18	ages 0-18	ages 0-18	
1	\$18,479-\$24,482	\$15,655-\$24,482	\$25,306-\$30,838	\$24,482-\$30,838	\$30,838-\$33,898	\$33,898-\$36,958	\$36,958-No Limit
2	\$25,011-\$33,135	\$21,187-\$33,135	\$34,250-\$41,737	\$33,135-\$41,737	\$41,737-\$45,879	\$45,879-\$50,021	\$50,021-No Limit
3	\$31,542-\$41,788	\$26,720-\$41,778	\$43,194-\$52,636	\$41,788-\$52,636	\$52,636-\$57,860	\$57,860-\$63,083	\$63,083-No Limit
4	\$38,073-\$50,440	\$32,253-\$50,440	\$52,138-\$63,535	\$50,440-\$63,535	\$63,535-\$69,840	\$69,840-\$76,145	\$76,145-No Limit
5	\$44,604-\$59,093	\$37,786-\$59,093	\$61,082-\$74,435	\$59,093-\$74,435	\$74,435-\$81,821	\$81,821-\$89,208	\$89,208-No Limit
6	\$51,135-\$67,746	\$43,319-\$67,746	\$70,026-\$85,334	\$67,746-\$85,334	\$85,334-\$93,802	\$93,802-\$102,270	\$102,270-No Limit
7	\$57,667-\$76,399	\$48,851-\$76,399	\$78,970-\$96,233	\$76,399-\$96,233	\$96,233-\$105,783	\$105,783-\$115,333	\$115,333-No Limit
8	\$64,198-\$85,052	\$54,384-\$85,052	\$87,914-\$107,132	\$85,052-\$107,132	\$107,132-\$117,764	\$117,764-\$128,395	\$128,395-No Limit
9	\$70,729-\$93,704	\$59,917-\$93,704	\$96,858-\$118,031	\$93,704-\$118,031	\$118,031-\$129,744	\$129,744-\$141,457	\$141,457-No Limit
10	\$77,260-\$102,357	\$65,450-\$102,357	\$105,802-\$128,931	\$102,357-\$128,931	\$128,931-\$141,725	\$141,725-\$154,520	\$154,520-No Limit
COST							
average monthly premium per child	\$0	\$0	\$49	\$49	\$68	\$77	\$214
co-payments per child per visit							
doctor visit	\$0	\$0	\$5	\$5	\$5	\$5	\$15
brand name prescription	\$0	\$0	\$9	\$9	\$9	\$9	\$18
generic prescription	\$0	\$0	\$6	\$6	\$6	\$6	\$10
specialist visits	\$0	\$0	\$10	\$10	\$10	\$10	\$25
er visits**	\$0	\$0	\$25	\$25	\$25	\$25	\$50

\* If your income is below any amount listed, your family could be eligible for Medical Assistance. For more details, please call 1-800-986-KIDS.  
 \*\* Emergency room visit co-pay applies if the child is not admitted to a hospital stay.

Updated June 2015

**Figure 4: Rates by Company**

CHIP Insurance Company	Low Cost 1	Low Cost 2	Low Cost 3	Full Cost
Aetna - Central	\$37.27	\$52.18	\$59.64	\$139.65
Capital BlueCross	\$53.65	\$75.12	\$85.85	\$241.61
Geisinger Health Plan	\$56.09	\$78.53	\$89.75	\$227.35
Highmark Blue Shield (Central PA)	\$61.71	\$86.40	\$98.74	\$308.50
United HealthCare of PA	\$30.44	\$42.61	\$48.70	\$135.77
UPMC for Kids	\$39.65	\$55.51	\$63.44	\$145.17

\* Some monthly CHIP premium rates may be lower than what's listed in Figure 4 because some CHIP insurance companies reduce premium costs that enrollees pay if they are not eligible for free CHIP. To find out if a company provides lower CHIP rates, please contact the corresponding numbers in Figure 2

**Figure 5: Federal Poverty Guidelines**

## Federal Poverty Guidelines

The new 2015 federal poverty guidelines have been released. The [2014 guidelines](#) are also provided here for reference.

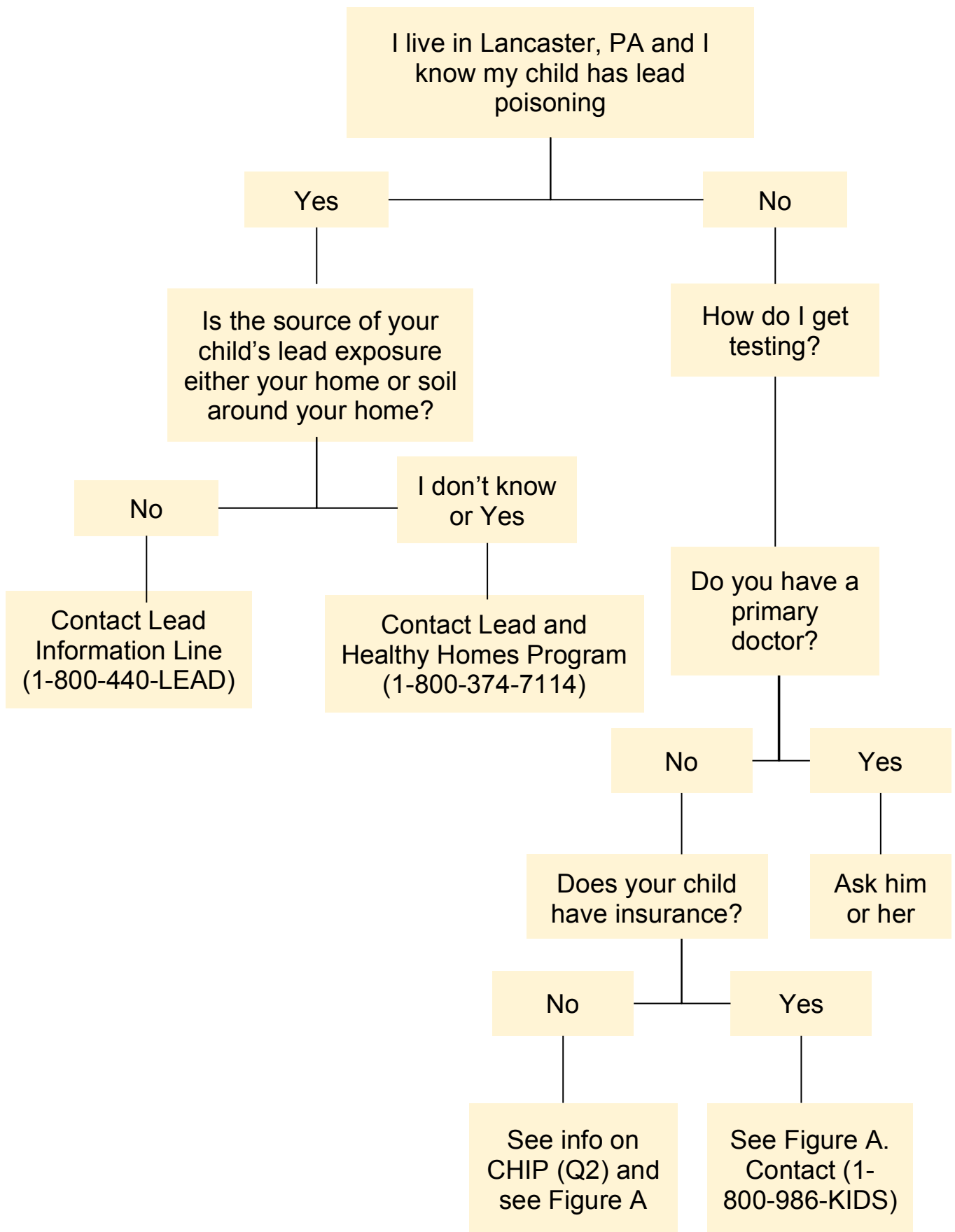
It's important to note that eligibility for Medicaid and the Children's Health Insurance Program (CHIP) is now determined by the 2015 guidelines. Eligibility for advance premium tax credits is determined by 2014 federal poverty guidelines.

State-run health insurance marketplaces should update their standards as soon as possible to align with those of the federally facilitated marketplaces. A short explanation of what these changes mean to consumers is [here](#) (via Center for Children and Families).

### 2015 Federal Poverty Guidelines

Federally facilitated marketplaces will use the 2015 guidelines to determine eligibility for Medicaid and CHIP.

Household Size	100%	133%	150%	200%	250%	300%	400%
1	\$11,770	\$15,654	\$17,655	\$23,540	\$29,425	\$35,310	\$47,080
2	15,930	21,187	23,895	31,860	39,825	47,790	63,720
3	20,090	26,720	30,135	40,180	50,225	60,270	80,360
4	24,250	32,253	36,375	48,500	60,625	72,750	97,000
5	28,410	37,785	42,615	56,820	71,025	85,230	113,640
6	32,570	43,318	48,855	65,140	81,425	97,710	130,280
7	36,730	48,851	55,095	73,460	91,825	110,190	146,920
8	40,890	54,384	61,335	81,780	102,225	122,670	163,560



**Sources:**

[http://www.portal.state.pa.us/portal/server.pt/community/lead\\_poisoning\\_prevention\\_control/14175/healthy\\_homes\\_foster\\_care\\_program\\_\(hhfcp\)/600352](http://www.portal.state.pa.us/portal/server.pt/community/lead_poisoning_prevention_control/14175/healthy_homes_foster_care_program_(hhfcp)/600352)

<http://www.portal.state.pa.us/portal/server.pt?open=514&objID=558057&mode=2>

[http://www.portal.state.pa.us/portal/server.pt/community/lead\\_poisoning\\_prevention\\_control/14175/lead\\_information\\_line/558054](http://www.portal.state.pa.us/portal/server.pt/community/lead_poisoning_prevention_control/14175/lead_information_line/558054)

<https://www.caplanc.org/Our-Programs/Women-Infants-Children-WIC/WIC-Program-Overview>

<https://www.caplanc.org/>

<http://www.lancastergeneralhealth.org/LGH/About-Lancaster-General-Health/Community-Health-Involvement/CBU/CBU/Community-Benefit-Update/2011-Community-Benefit-Update/May-2011-Edition/Coalition-Formed-to-Prevent-Lead-Poisoning.aspx>

[http://lancasteronline.com/news/get-the-lead-out/article\\_b18b15d9-6111-5453-846c-c2f2a4b8dc89.html?mode=jqm](http://lancasteronline.com/news/get-the-lead-out/article_b18b15d9-6111-5453-846c-c2f2a4b8dc89.html?mode=jqm)

<http://www.lancastergeneralhealth.org/LGH/About-Lancaster-General-Health/Community-Health-Involvement/CBU/CBU/Community-Benefit-Update/2011-Community-Benefit-Update/November-2011-Edition/Lead-Poisoning-prevention-after-September%E2%80%99s-floods.aspx>

<http://www2.epa.gov/lead>

[http://lancasteronline.com/news/local/silent-menace-lead-still-a-big-problem-in-lancaster-county/article\\_75691bfc993-11e4-85cc-6b8ea22537f6.html](http://lancasteronline.com/news/local/silent-menace-lead-still-a-big-problem-in-lancaster-county/article_75691bfc993-11e4-85cc-6b8ea22537f6.html)

<https://pa211.communityos.org/zf/taxonomy/detail/id/635943>

[https://pa211.communityos.org/zf/profile/search/dosearch/1/taxonomy\\_name/Lead%20Poisoning%20Screening](https://pa211.communityos.org/zf/profile/search/dosearch/1/taxonomy_name/Lead%20Poisoning%20Screening)

dpw.state.pa.us

<http://www.dhs.pa.gov/>

<http://cityoflancasterpa.com/darren-parmer>